

### Hardware

AFIX Tracker LW systems include the following or equivalent hardware:

Dell Precision Workstation  
(with Keyboard and Mouse)

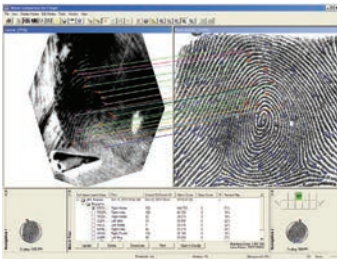
LCD Monitor with Speakers

FBI Appendix F Certified  
Flatbed Scanner

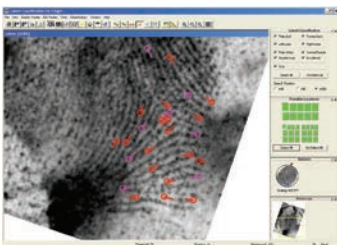
External Backup Drive

APC Battery Backup (UPS)

Designed from the ground up by and for Latent Print Examiners.



The Stereo Comparison screen which displays search results in AFIX Tracker, Tracker LW and Tracker RW provides a dynamic environment for the examiner's analysis and evaluation of candidates. Features include the visual linking of matching features, both as a complete pattern set and individually, the ability to view both record print and latent results in a single screen, the ability to edit minutiae patterns and get dynamic updating of search results without resubmission of the search, and a WYSIWYG stereo print capability.



AFIX Tracker LW provides a comprehensive suite of latent editing tools and search options including AFIX SmartExtract<sup>®</sup> automated feature extraction, image filtering and enhancement, and simultaneous finger, palm and latent search capability.

Adding an AFIX Tracker LW (Latent Workstation) to your existing AFIX system gives your forensic investigations team the ability to increase their production, streamline workflow and quickly reduce any backlog of latent cases waiting to be processed.

NIST-compliant and fully compatible with all other AFIX systems, Tracker LW focuses on efficiently accelerating the latent workflow, and provides the same latent print entry, minutiae editing, search submission and search results review capabilities found in the main AFIX Tracker system's feature set.

AFIX Tracker LW allows the economical and seamless addition of full-featured latent workstations to your existing AFIX systems:

- Allows easy integration with existing AFIX systems.
- Provides both local database and AFIX Remote Search capabilities.
- Provides (with appropriate permissions) direct search submission to the FBI's IAFIS database and/or the DoD ABIS database.
- Search latents against record fingerprints, palmprints and other latent prints simultaneously.
- User interface for latent file entry and editing, search submission and search results review is identical to AFIX Tracker – existing Tracker users already know how to operate Tracker LW.
- Fully NIST-EFTS compliant.
- FBI-certified WSQ and JPEG-2000 compression.
- Unlimited toll-free technical support and all software updates included.
- Enter latents via flatbed scanner from almost any source including hinge lifts, documents, gel lifters, photos, etc., or import digital images directly from cameras or other sources.
- Automatic scaling of photographed latents. Tracker LW's scaling tool automatically compensates for unknown scale when scanning photographed latents or importing images directly from a digital camera.
- AFIX Smart Extract<sup>®</sup> provides the option to automate the extraction of minutiae in latents, if desired.
- Tracker LW allows the user to intervene at any time in all minutiae extraction and editing, ensuring that the Latent Print Examiner is always in complete control of the process.

205 N. Walnut

Pittsburg, KS 66762

620-232-6420

toll free: 877-438-2349

email: info@afix.net

## AFIX Technologies, Inc.<sup>®</sup>